



TEMPLE EMANU-EL Bulletin

Volume 77, Number 24

February 11, 2005

UPCOMING EVENTS

Tuesday, February 15 12:30 p.m.
**Women's Auxiliary:
Book Discussion Group**

Rabbi Leon A. Morris will discuss with us *Natasha and Other Stories* by David Bezmozgis. Feel free to bring your lunch. Coffee and cookies will be served. Questions? Call (212) 744-1400, ext. 235.



Wednesday, February 16 9:30 a.m.
Young Families: Storytime



Temple Librarian Elizabeth Stabler will read about the Sabbath from our wonderful collection of children's books. All attendees must preregister to (212) 744-1400, ext. 362.

SABBATH SERVICES

**Friday evening, February 18
Main Sanctuary**

Organ Recital—5 p.m.
Sabbath Eve Service—5:15 p.m.
WQXR Radio (96.3 FM) and Internet (www.wqxr.com) broadcasts—5:30 p.m.

**Saturday morning, February 19
Women's Auxiliary Lounge**

Torah Study—9:15 a.m.

Main Sanctuary

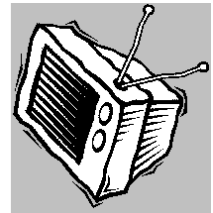
Service—10:30 a.m.
Torah Portion—Tetzaveh
Readings—Exodus 27:20-30:10
Ezekiel 43:10-27

Rabbi Amy B. Ehrlich preaching

EMANU-EL
LEAGUE

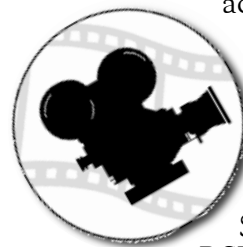
Thursday, February 17
7:30 p.m.
**Apprentice
Viewing Party**

Let's watch *The Donald* together at O'Flanagan's (65th Street and First Avenue)! Come early and mingle before the show. Cost is \$7 for Emanu-El League members, \$12 for nonmembers—which includes munchies and two drinks. RSVP by Monday, February 14 and save \$2 on the entrance fee.



Sunday, February 27 11:30 a.m.
Afternoon at the Movies

Join us for an afternoon of classic silent comedy film shorts—Charlie Chaplin, Buster Keaton, Laurel and Hardy—accompanied by live music.



Our program includes brunch, a Q&A session following the screening and a special surprise!

Cost is \$7 for Emanu-El League members, \$12 for nonmembers.

RSVP by Wednesday, February 23 and save \$2. On the day of the event, enter through the Marvin and Elisabeth Cassell Community House, One East 65th Street.

The Emanu-El League is for Jewish singles in their late 20s through early 40s. RSVP to tesevents@aol.com or (212) 744-1400, ext. 241.

MEET
THE AUTHOR

Wednesday, February 16
6:30 p.m.

**Jewes in America:
Conquistadors,
Knickerbockers, Pilgrims
and the Hope of Israel**

Dr. Michael Terry will be the next featured speaker in this lecture series sponsored by the Ivan M. Stettenheim Library and the Herbert and Eileen Bernard Museum of Judaica in honor of the 350th anniversary of Jews in America. Dr. Terry is chief of the Dorot Jewish Division at the New York Public Library. His *Reader's Guide to Judaism* won the National Book Award. ("Jewes" is a reference to the spelling used by Thomas Thorowgood in his book *Jewes in America, or, Probabilities That the Americans Are of That Race*, written in 1650.)



This event is free and open to the public. On the day of the event, please enter at One East 65th Street.

SKIRBALL
CORNER

Detective Stories,
Graphic Novels and
Contemporary American
Jewish Culture

DR. LAURENCE ROTH
February 17 7 PM

Much has been written on the major works of Jewish literary fiction, but what about more popular genres of Jewish literature? Join Laurence Roth in discovering the place of the past in the American Jewish detective story and graphic novel and analyze what these popular fictions tell us about contemporary Jewish culture.

This lecture is co-sponsored by the Skirball Center for Adult Jewish Learning at Temple Emanu-El and the Center for Advanced Judaic Studies at the University of Pennsylvania. Cost is \$12 at the door. Enter at One East 65th Street.

SKIRBALL



The Skirball Center for Adult Jewish Learning at Temple Emanu-El

PULPIT FLOWERS

**Pulpit flowers at Sabbath worship services this weekend
are the generous donation of our congregants:**

Thomas and Elizabeth Dubbs
in honor of their children
Katherine Pearl and Willam Harrison
becoming B'nei Mitzvah

Mary K. and Rabbi Howard I. Bogot
in loving memory of
Maxine Livingston Elbaum

Bettijane and Steven Eisenpreis
in loving memory of
Alfred Eisenpreis and
Carol Hess Long and Clinton Mayer Long

Richard H. M. and Gail Lowe Maidman
in loving memory of Gail's father,
Edwin S. Lowe

Rhoda Weiskopf Cohen
in loving memory of her parents,
Dr. Samuel and Esther Altman Weiskopf

Charles S. Salomon
The Universal Funeral Chapel
1076 Madison Avenue (212) 753-5300
Our service is available in the Temple, home, or our Chapel.

The Cemeteries of Congregation Emanu-El
Salem Fields and Beth-El
A limited number of above-ground crypts are available in
our community mausoleum. For information, please call
Dr. Mark W. Weisstuch at the Temple Office, (212) 744-1400.

AROUND THE TEMPLE: VISITING DAYS AT TEMPLE EMANU-EL

Once a year, parents of our Religious School students have an opportunity to witness and participate in classroom activities. This year parents joined their children on Wednesday afternoon, January 26; Sunday morning, January 30; and Monday afternoon, January 31.

After beginning with a beautiful spread of coffee, pastries, cookies, bagels and croissants offered by our Religious School Parents Organization, parents accompanied their children up the elevators to class.

Parents were able to observe academic lessons from history and holidays to Hebrew. Most teachers arranged special activities whereby parents and their children worked together—sometimes as partners, sometimes as adversaries and sometimes simply for discussion.

In some classes, parents and children participated in activities about the meaning and purpose of the *Tu B'Shevat* holiday (the New Year for Trees). All parents and children also had the very special opportunity of experiencing music taught by Rabbi Posner and Cantor Lori Corrsin. What a delight!

We look forward to this time every year. Watching parents and children leave with smiling faces is our greatest reward. We look forward to having our parents visit again next year.

—Frances Oelbaum, Principal



UPCOMING EVENTS

Friday, February 25 5:15 p.m.
Religious School: Sabbath Dinner

All students and their families are encouraged to join us for services in the Main Sanctuary, followed by a traditional Sabbath dinner. Students in kindergarten, first and second grades are invited to participate in the Sabbath dinner blessings. Extended family and friends also are invited to witness your child's participation.



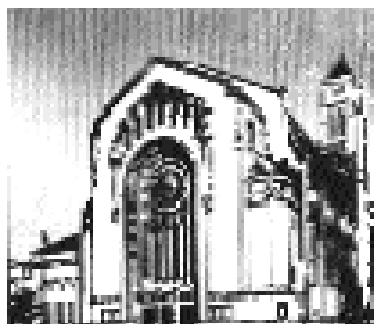
Cost is \$25 per person. RSVP by Monday, February 21 to (212) 744-1400, ext. 226.

Wednesday, March 9 10:30 a.m.
**Women's Auxiliary:
 Coffee With Student Rabbi
 Howard Goldsmith**

Women's Auxiliary members and their guests are invited to this special presentation by Student Rabbi Howard Goldsmith on Philip Roth's book *The Plot Against America*, which is available in the Temple library. A question-and-answer session will follow. We look forward to a stimulating and thought-provoking program. RSVP to (212) 744-1400, ext. 235 by Friday, March 4. (Please note, this program is in place of the program originally scheduled for March 8.)



TEMPLE EMANU-EL BULLETIN



February 11, 2005
 Volume 77, Number 24
 Web site: www.emanuelnyc.org

Dr. David M. Posner
Senior Rabbi
 Rabbi Amy B. Ehrlich
Associate Rabbi
 Rabbi Nadia E. Gold
Assistant Rabbi
 Lori Corrsin
Cantor

Dr. Ronald B. Sobel
Senior Rabbi Emeritus
 Robert A. Bernhard
President
 Rabbi Leon A. Morris
*Director of the Skirball Center
 for Adult Jewish Learning*

Dr. Mark W. Weisstuch
Administrative Vice President
 Mark H. Heutlinger
Administrator
 Robyn W. Cimbol
Director of Development
 Henry Fruhauf
Administrator Emeritus

Published weekly September 3 through June 10 by Congregation Emanu-El of the City of New York, formed by the consolidation of Emanu-El Congregation (founded 1845) and Temple Beth-El.

Postmaster, send address changes to: Temple Emanu-El Bulletin, One East 65th Street New York, NY 10021 (212) 744-1400 Periodicals Postage Paid at New York, NY USPS 891-160.

PERIODICALS POSTAGE
 PAID AT NEW YORK, NY