



# TEMPLE EMANU-EL Bulletin

Volume 77, Number 25

February 18, 2005

## UPCOMING EVENTS

Friday, February 25 5:15 p.m.  
**Religious School: Sabbath Dinner**

All students and their families are encouraged to join us for services in the Main Sanctuary, followed by a traditional Sabbath dinner. Students in kindergarten, first grade and second grade are invited to participate in the Sabbath dinner blessings. Extended family and friends also are invited to witness your child's participation.



Cost is \$25 per person.  
RSVP by Monday, February 21 to  
(212) 744-1400, ext. 226.

## SABBATH SERVICES

**Friday evening, February 25**  
**Main Sanctuary**

Organ Recital—5 p.m.  
Sabbath Eve Service—5:15 p.m.  
WQXR Radio (96.3 FM) and Internet  
(www.wqxr.com) broadcasts—5:30 p.m.

**Saturday morning, February 26**  
**Women's Auxiliary Lounge**

Torah Study—9:15 a.m.

**Main Sanctuary**

Service—10:30 a.m.  
Torah Portion—Ki Sisa  
Readings—Exodus 30:11-34:35  
I Kings 18:1-39

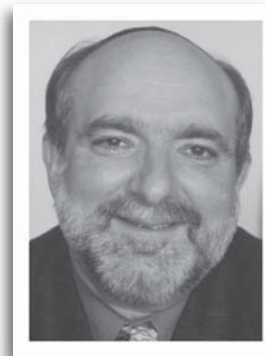
**Rabbi David Ellenson preaching**

GUEST  
PREACHER

Saturday, February 26  
10:30 a.m.

**Rabbi Nathan A. Perilman**  
**Memorial Sermon-Lecture**

Temple Emanu-El is pleased to welcome Dr. David Ellenson, president of Hebrew Union College-Jewish Institute of Religion (HUC-JIR), who will be this year's guest preacher at the annual Rabbi Nathan A. Perilman Memorial Sermon-Lecture. Rabbi Ellenson



is a successor of Rabbi Isaac Mayer Wise, who founded HUC-JIR in 1875 in Cincinnati and for whom the Wise Hall of our synagogue is named.

A graduate of HUC-JIR's New York campus,

Dr. Ellenson holds a doctorate in philosophy from Columbia University. His passionate scholarly interest is the development of 19<sup>th</sup> century modern orthodox Judaism in Germany.

This event is named for Dr. Nathan Perilman, who served Temple Emanu-El from 1932 until his retirement in 1973. In 1982, the congregation established this lectureship in honor of the 50<sup>th</sup> anniversary of Dr. Perilman's ordination. The lecture is presented each year in the form of a Sabbath morning sermon. Dr. Perilman passed away in 1991.



 = Hearing enhancement system available

## UPCOMING EVENTS

Sunday, February 27

11:30 a.m.

### **Emanu-El League: Afternoon at the Movies**

Join us for an afternoon of classic silent comedy film shorts—Charlie Chaplin, Buster Keaton, Laurel and Hardy—accompanied by live music.

Our program also features brunch, a Q&A session after the screening and...a surprise!

The cost is \$7 for Emanu-El League members, \$12 for nonmembers.

Sign up for the event by Wednesday, February 23 to (212) 744-1400, ext. 241 or [tesevents@aol.com](mailto:tesevents@aol.com) and save \$2 on the cover. Enter through the Marvin and Elisabeth Cassell Community House, One East 65<sup>th</sup> Street. (*The Emanu-El League is for Jewish singles in their late 20s through early 40s.*)

Monday, March 7

6:30 p.m.

Wednesday, March 9

6:30 p.m.

### **Youth Group Leadership Academy**

Don't forget about our next scheduled sessions: Monday for eighth graders, Wednesday for ninth graders. Dinner will be served.

Wednesday, March 9

10:30 a.m.

### **Coffee With Student Rabbi Howard Goldsmith**

Women's Auxiliary members and their guests are invited to this special presentation by Student Rabbi Howard Goldsmith on Philip Roth's book *The Plot Against America*. RSVP to (212) 744-1400, ext. 235 by Friday, March 4. (*Please note, this program is in place of the program originally scheduled for March 8.*)

## TO BE NOTED



### **Hearing Enhancement System**

Both the Main Sanctuary and the Leon Lowenstein Sanctuary are equipped with an infrared sound system. Headsets or neck loops may be obtained from an usher or lobby attendant.

### **Special Prayer Books**

Large-print volumes of the *Union Prayer Book* can be obtained from one of our ushers or lobby attendants for use during Sabbath services. Braille editions also are available.

## PULPIT FLOWERS

**Pulpit flowers at  
Sabbath worship services  
this weekend are the generous  
donation of our congregants:**

Rosalind Pretzfelder  
in loving memory of  
*Tillie and George Pretzfelder*

**For information about sponsoring  
Pulpit Flowers or an Oneg Shabbat,  
contact Sherry Nehmer at  
(212) 744-1400, ext. 312 or  
[snehmer@emanuelnyc.org](mailto:snehmer@emanuelnyc.org).**

Charles S. Salomon  
The Universal Funeral Chapel  
1076 Madison Avenue (212) 753-5300  
Our service is available in the Temple, home, or our Chapel.

## B'NEI MITZVAH

**The following Religious School students  
will become B'nei Mitzvah this weekend:**

*Michael Harris Thaler, son of  
Linda and Fred Thaler*

*Molly Cara Gendelman, daughter of  
Nina Leighton and David Gendelman*

*Samuel Jacob Wetzler, son of  
Rebecca and Mark Wetzler*

**We are grateful for their sponsorship of  
Friday evening's Oneg Shabbat.**

The Cemeteries of Congregation Emanu-El  
Salem Fields and Beth-El  
A limited number of above-ground crypts are available in  
our community mausoleum. For information, please call  
Dr. Mark W. Weisstuch at the Temple Office, (212) 744-1400.

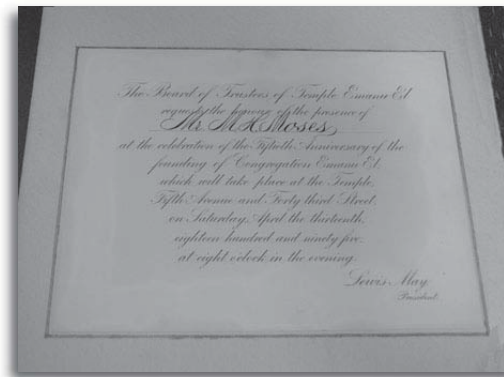
## FROM THE ARCHIVES: EMANU-EL TURNS 50

**F**or three days in April 1895, members of Congregation Emanu-El celebrated the 50<sup>th</sup> anniversary of the founding of their synagogue. Activities commenced with a Friday evening service on April 12, where introductory remarks were made by the Rev. Dr. Gustav Gottheil, Temple Emanu-El's third senior rabbi. Sabbath morning services were held on Saturday, April 13, and members were beckoned to return to the synagogue (located still on 43<sup>rd</sup> Street and Fifth Avenue at this time) through hand-scripted invitations, under the auspices of then president Lewis May, for evening festivities. Entrance cards also were required.

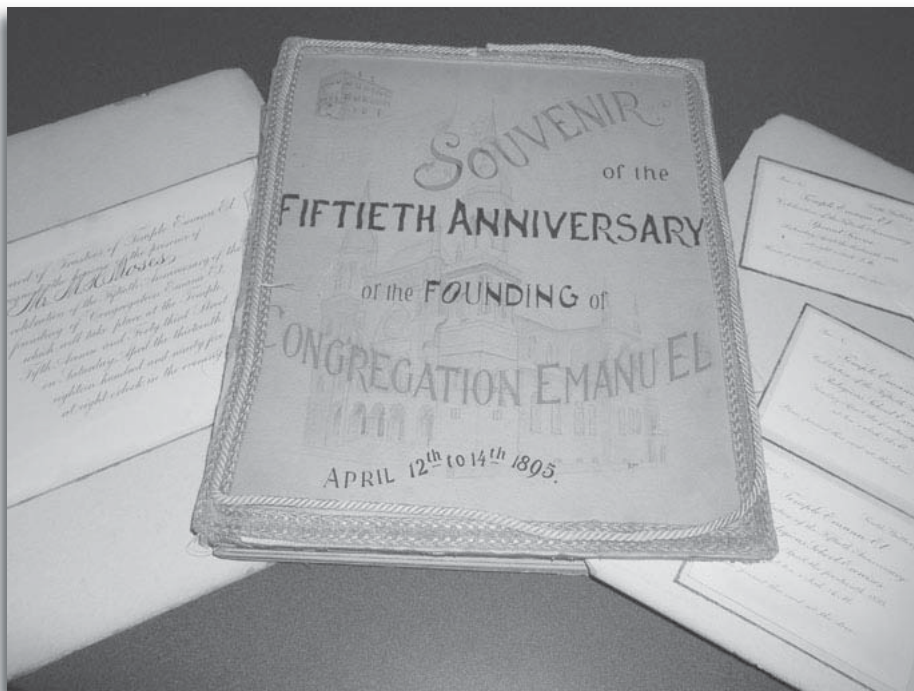
As part of the celebration, a fundraising proposal was announced to Temple members. Collected monies would be used to expand the 43<sup>rd</sup> Street site into the vacant adjoining lot by building the "Temple Emanu-El Chapel," which would be dedicated in remembrance of the 50<sup>th</sup> anniversary and would be used for marriages, funerals, meetings, lectures and philanthropic work.

Activities culminated Sunday morning, April 14, with a Children's Festival that in-

cluded flower offerings and prayers. Richard J.H. Gottheil, son of the Rev. Dr. Gottheil, delivered a history of the Temple Emanu-El Religious School. Also, the Rev. J. Silverman, D.D., delivered the "significance of Israel's history" as described through six periods: Mount Sinai, Solomon's Temple, the Maccabees, Jerusalem, Spain and America: Temple Emanu-El of New York City.



A beautifully printed invitation for the Saturday evening festivities, addressed to Mr. M. H. Moses



A hand-crafted scrapbook, commemorating Temple Emanu-El's 50<sup>th</sup> anniversary and celebration

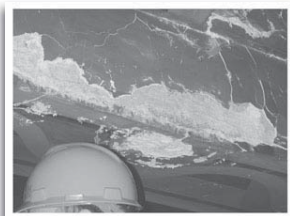
## AROUND THE TEMPLE

### Sanctuary Restoration: A Bird's Eye View

**M**embers of the Women's Auxiliary and their guests gathered in the Leventritt Room on February 8 for a special presentation by Temple Administration Mark H. Heutlinger, who delivered a fascinating history of our Temple's architecture and the styles that influenced its design, as well as an update on the restoration of the Main Sanctuary and the Beth-El Chapel.



Mark Heutlinger  
discussing the influence  
of Japanese art

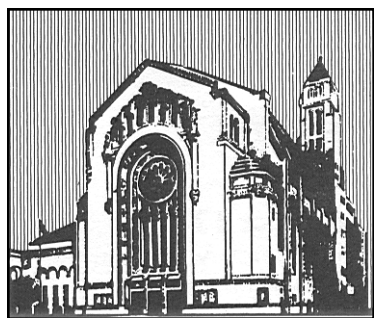


Decay of plaster of Paris  
on Main Sanctuary beams



Hand-painted designs on  
the Main Sanctuary ceiling

## TEMPLE EMANU-EL BULLETIN



February 18, 2005  
Volume 77, Number 25  
Web site: [www.emanuelnyc.org](http://www.emanuelnyc.org)

**Dr. David M. Posner**

*Senior Rabbi*

**Rabbi Amy B. Ehrlich**

*Associate Rabbi*

**Rabbi Nadia E. Gold**

*Assistant Rabbi*

**Lori Corrsin**

*Cantor*

**Dr. Ronald B. Sobel**

*Senior Rabbi Emeritus*

**Robert A. Bernhard**

*President*

**Rabbi Leon A. Morris**

*Director of the Skirball Center  
for Adult Jewish Learning*

**Dr. Mark W. Weisstuch**

*Administrative Vice President*

**Mark H. Heutlinger**

*Administrator*

**Robyn W. Cimbol**

*Director of Development*

**Henry Fruhauf**

*Administrator Emeritus*

**Published weekly** September 3 through  
June 10 by Congregation Emanu-El of the  
City of New York, formed by the  
consolidation of Emanu-El Congregation  
(founded 1845) and Temple Beth-El.

**Postmaster,** send address changes to:  
Temple Emanu-El Bulletin, One East 65<sup>th</sup> Street  
New York, NY 10021 (212) 744-1400  
Periodicals Postage Paid at New York, NY  
USPS 891-160.

PERIODICALS POSTAGE  
PAID AT NEW YORK, NY